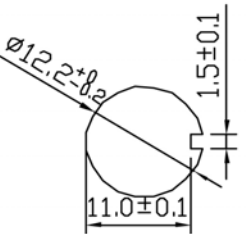
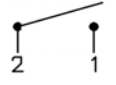
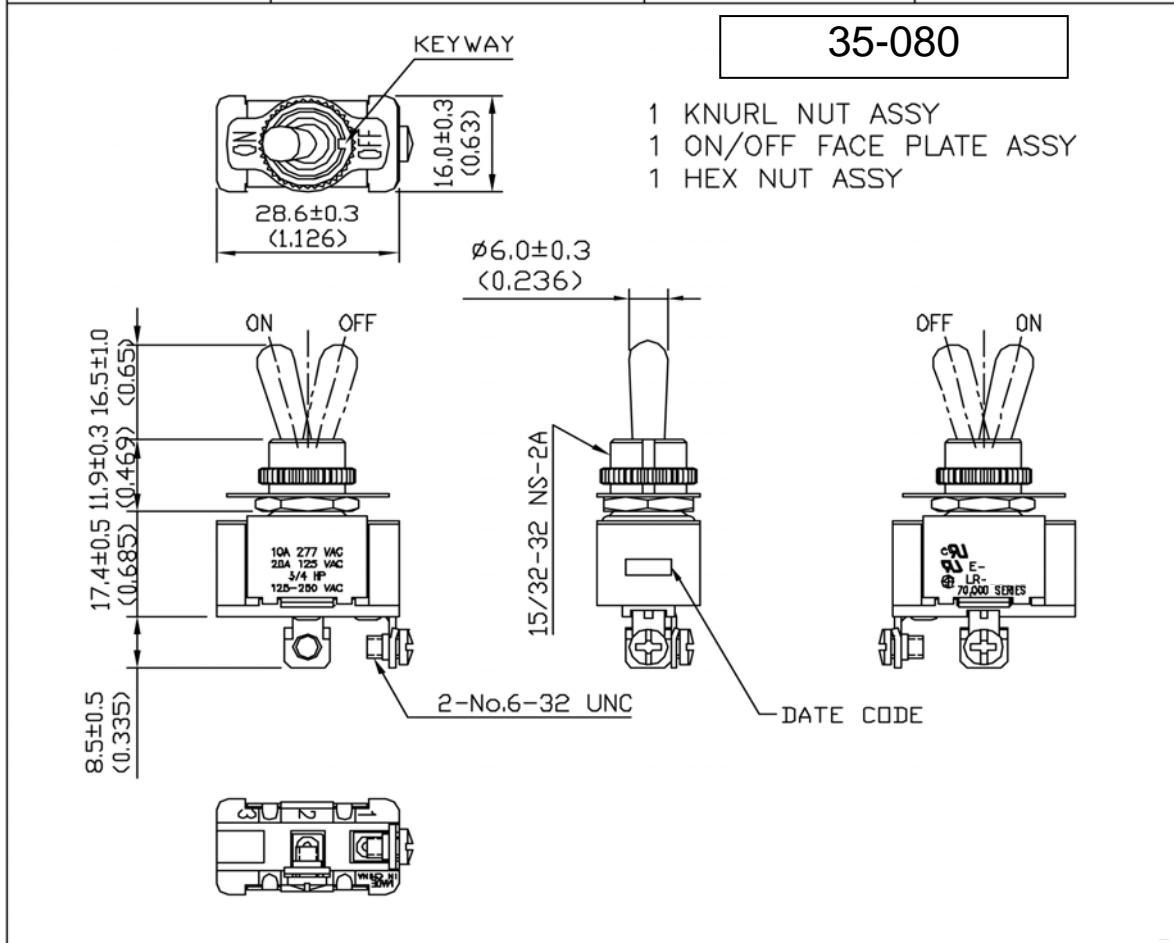


35-080

Rating	20A 125V,10A 277V AC 3/4HP 125-250 VAC	Mounting Hole	Circuit Diagram
Contact Resistance	50m ohm Max.		
Insulation Resistance	DC 500V 100M ohm Min.		
Dielectric Strength	AC 1500V 1 minute		
Switch Function	2P SPST ON-OFF		
Operation Force	600g±200g		
Operating Temperature	0°C~65°C		



△2	01/14/'09		Add operating temperature : 0°C~65°C
△1	10/21/'02		REVISED
△	Date	Name	Descriptions
Drawn	Checked	Approved	
			Customer No.
01/14/'09			
			REV. 2